

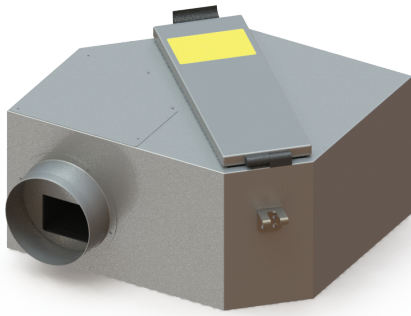
# Fan Specifications

Model *EVOBF-133EC* for *AQ180A* systems

**HOMESOL**

HEALTHY HOME SOLUTIONS

0800 822 663



## Unit Features

- High-flow and high-pressure fan
- EC 3-Phase DC motor
- Re-engineered for New Zealand
- Bearing life rated for 50000 hours
- Removable lid for filter replacement
- Constant variable airflow
- Internal thermal management control
- Built-in intelligent fan controls

MODEL	EVOBF-133EC
<b>Fan Construction</b>	Metal PC
<b>Voltage</b>	230VAC
<b>Voltage</b>	50Hz
<b>Peak Current (A)</b>	0.012 ~ 0.61
<b>Fan Speed (RPM)</b>	600 ~ 2000
<b>Air Flow (m3/hr)</b>	63 ~ 393
<b>Air Flow (L/s)</b>	17 ~ 109
<b>Pressure (Pa)</b>	379
<b>Max Power (W)</b>	65
<b>Sound (dB(A) Av)</b>	29
<b>Max Operating Temp (°C)</b>	60
<b>IP Rating</b>	IP44
<b>Climate Class</b>	T
<b>Compliance</b>	AS/NZS 60355.2.80 T

**ENERGY EFFICIENCY**

**AirStream** EVOBF-133EC

A+ A A- B C D E F G **A**

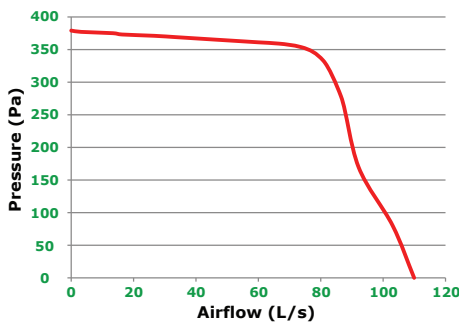
29 dB

393 m<sup>3</sup>/hr

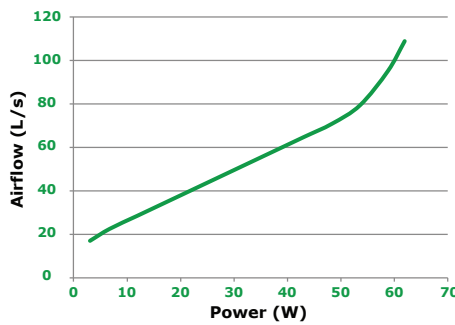
Model	Voltage (V/Hz)	Power (W)	Speed (RPM)	Airflow (m <sup>3</sup> /hr)
EVOBF-133EC	230/50	2 ~ 65	600 ~ 2000	63 ~ 393

Specific Fan Power (SFP)  
**0.325 Watts per L/s**

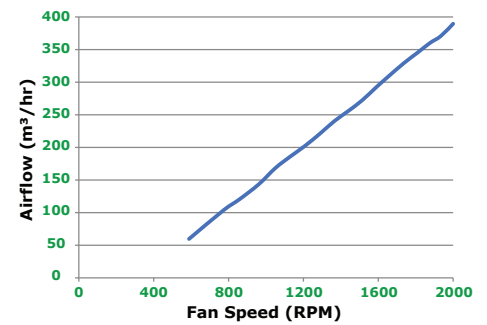
## Performance Curve



## Energy Curve



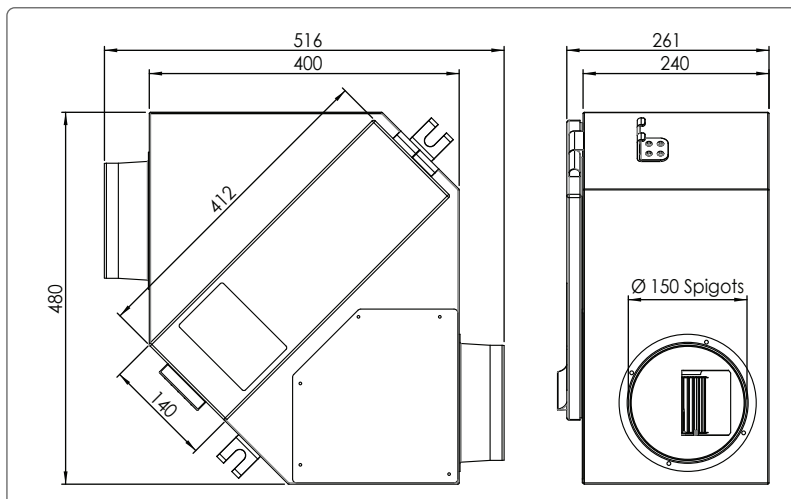
## Flow rates RPM



## Sound Performance Parameters

	dBa @ 3m	63 Hz	125 Hz	250 Hz	500 Hz	1k Hz	2k Hz	4k Hz	8k Hz	Total SPL
600 RPM	24.9	18	17	19	17	18	15	20	21	28.4
1200 RPM	27.9	19	21	23	24	22	24	21	23	31.4
2000 RPM	32	21	22	27	29	27	29	27	22	35.5

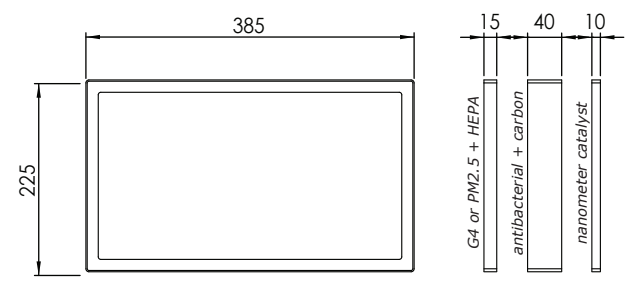
## Unit Dimensions



## Filter Info

### Available Filters (with AQ180A system):

- G4 Filter (Standard)
  - PM2.5 plus HEPA Filter (Optional Upgrade)
  - 6-Level Filtration (Optional Upgrade)
- includes PM2.5, HEPA, antibacterial network, HEPA H11, activated carbon, and nanometer catalyst filters



For more information, visit [www.homesol.co.nz](http://www.homesol.co.nz)